

NEWS RELEASE

OPTO DIODE CORPORATION

An ITW Company
1260 Calle Suerte
Camarillo, CA 93012
Contact: Russell Dahl, Business Unit Manager
Phone: 805-499-0335 x312
Fax: 805-499-8108
E-mail: russtdahl@optodiode.com
Web Site: www.optodiode.com

Media Contact: Marlene Moore
Smith Miller Moore
Phone: 818-708-1704
Email: marlene@smithmillermoore.com

For Immediate Release

Opto Diode Introduces Large Electron Detector

CAMARILLO, Calif. – December 15, 2022 - Opto Diode Corporation, an ITW company, introduces the **AXUV100G**, a 100 mm x 100 mm active area electron detection device specially designed for use in radiation detection applications.

The electron photodetector features electron responsivity at energy levels as low as 100eV. The shunt resistance is at 20 Mohms, minimum; reverse breakdown voltage is 5V (minimum) and 10V (typical). The high-performance AXUV100G's capacitance is 5 nanofarads (nF), typical. Rise time is at a maximum of 10 μ sec.

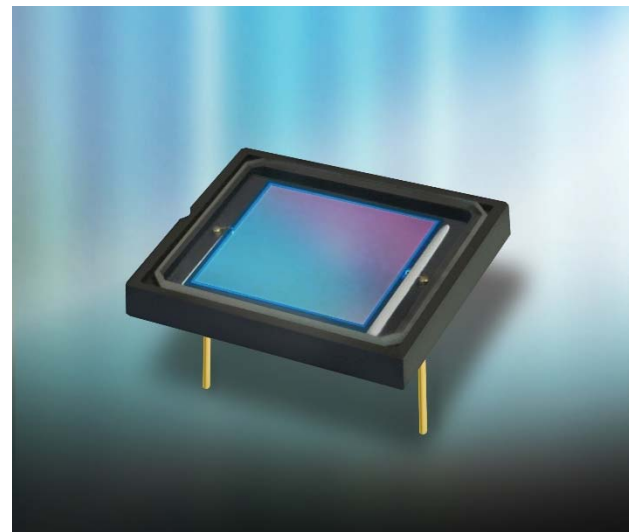
Ambient storage and operating temperatures range from -10 °C to 40 °C; nitrogen or vacuum storage and operating temperatures range from -20 °C to 80 °C. The lead soldering temperature for the UV device is 260 °C. To download the data sheet and view typical electron detection response, EUV-UV photon response, and typical UV-VIS-NIR photon responsivity charts, go to:

<https://optodiode.com/pdf/AXUV100GDS.pdf>. For additional information on the high performance AXUV electron detector series, please visit:

<https://optodiode.com/photodiodes-axuv-detectors.html>.

Opto Diode's AXUV100G electron detector joins the large AXUV family of photodetectors offered and available for online purchase at DigiKey:

<https://www.digikey.com/en/products/detail/AXUV100G/958-1002-ND/2931615>.



To learn more about Opto Diode's full line of high-performance, reliable, and highly durable photodiodes, sensors, optoelectronic modules, visible and infrared LEDs, and photonics assemblies for critical applications, visit: www.optodiode.com.

Opto Diode Corporation (Camarillo, CA - www.optodiode.com), an ITW Company, delivers industry-leading sensors, photodiodes, IR detectors, photonic modules, assemblies, and LEDs.

In a recent poll, our customers cited why they chose Opto Diode over our competitors. The most important reasons were product quality and dependability, followed by flexibility and our willingness to help, even when it is the customer's internal issue. Reliable product lifetime is also very important to our customers.

We pride ourselves in being a team player, offering real-world solutions to our customers. With long-lifetime product reliability, superior quality and fast delivery, Opto Diode delivers advanced performance sensors from the extreme ultraviolet (UV) to the mid-infrared (mid-IR). Our products provide unparalleled high-energy particle, electron, X-ray, and UV detection along with superior sensitivity to discriminate trace gases or detect heat, sparks, or flames in the mid-IR spectrum. Other products include high performance LEDs with radiometric emissions from 365 to 940 nm and IR emitters covering 1 to 10 microns.

In addition, Opto Diode can customize the entire product quality system to test, qualify, and document parts and write procedures to the customers' own internal guidelines and specifications. This includes a paper trail, every step of the way, when needed.

Opto Diode serves a variety of industries including aerospace, automotive, biotechnology, food processing, medical, military/defense, semiconductor equipment manufacturing, and test & measurement. Our manufacturing process is in a cleanroom environment, from start to finish. Opto Diode's domestic U.S. facility is optimized for design and manufacturing with an on-site wafer fabrication, class 1,000 to class 10,000 clean rooms, extensive assembly capabilities and packaging expertise. From prototyping to high-volume production, we manufacture wafers-to-components then package and assemble photonic modules-to-optoelectronic sub-systems. For more information, visit www.optodiode.com.

#