

# NEWS RELEASE

## OPTO DIODE CORPORATION

An ITW Company  
1260 Calle Suerte  
Camarillo, CA 93012  
Contact: Russell Dahl, Business Unit Manager  
Phone: 805-499-0335 x312  
Fax: 805-499-8108  
E-mail: [rusgdahl@optodiode.com](mailto:rusgdahl@optodiode.com)  
Web Site: [www.optodiode.com](http://www.optodiode.com)

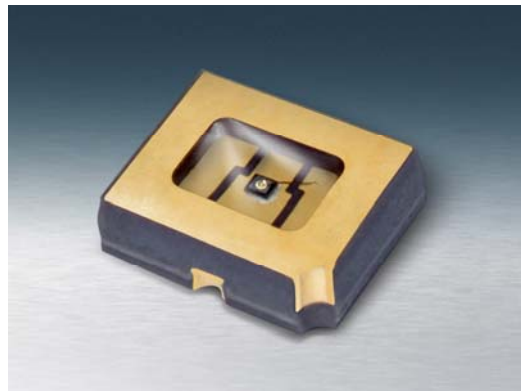
## Media Contact: Marlene Moore

Smith Miller Moore  
Phone: 818-708-1704  
Email: [marlene@smithmillermoore.com](mailto:marlene@smithmillermoore.com)

*For Immediate Release*

## Opto Diode Introduces Deep Red Surface-Mount LED

**CAMARILLO, CA - January 17, 2017** - Opto Diode Corporation, an ITW company, introduces a deep red, surface-mount device (SMD) light-emitting diode (LED) that delivers exceptional efficiency for biological analysis, health, science, medical, and veterinary applications. **OD-685C LED** features 2.0mW of radiant power at a forward current of 20mA, peak wavelength of 685nm, and radiant efficiency of 56 percent. Typical applications require radiometric measurement with tight spectral bandwidth.



The rugged new surface-mount device is fully operational within a very wide temperature range from -40 °C to +125 °C, making it ideal for use in harsh environmental conditions. The forward voltage of the OD-685C is typically 1.8V with a maximum of 2.2V. The spectral bandwidth at 50 percent is 30 nm. For higher optical power the device may be operated with total power dissipation at 110 mW and continuous forward current at 50 mA or with the peak forward current (at 10µSec @ 300 Hz) at 100 mA.

Opto Diode's expanding product lines will include several surface-mount devices to be introduced in 2017. For added convenience and affordability, the OD-685C samples are available on tape and reel. The new deep red SMD LED is RoHS and REACH compliant.

To learn more about Opto Diode's OD-685C and/or OD-2438, please visit [www.optodiode.com](http://www.optodiode.com) or call sales today at (805) 465-8700.

**Opto Diode Corporation** (Camarillo, CA - [www.optodiode.com](http://www.optodiode.com)), an ITW Company, delivers industry-leading sensors, photodiodes, IR detectors, photonic modules, assemblies, and LEDs. Available in standard and custom designs, Opto Diode products have earned a reputation for high performance, superior quality and reliability for over 30 years. Opto Diode offers advanced performance sensors from the extreme ultraviolet (UV) to the mid-infrared (mid-IR). Our products provide unparalleled high-energy particle, electron, X-ray, and UV detection along with superior sensitivity to discriminate trace gases or detect heat, sparks, or flames in the mid-IR spectrum. Other products include high performance LEDs with radiometric emissions from 365 to 940 nm and IR emitters covering 1 to 10 microns.

Opto Diode serves a variety of industries including aerospace, automotive, biotechnology, food processing, medical, military/defense, industrial, semiconductor equipment manufacturing, and test & measurement. Our manufacturing process is in a cleanroom environment, from start to finish. Opto Diode's domestic U.S. facility is optimized for design and manufacturing with an on-site wafer fabrication, class 1,000 to class 10,000 clean rooms, extensive assembly capabilities and packaging expertise. From prototyping to high-volume production, we manufacture wafers-to-components then package and assemble photonic modules-to-optoelectronic sub-systems. For more information, visit [www.optodiode.com](http://www.optodiode.com).

# # #

